

# EMAS in Schools

## Gymnasium Rahlgasse Vienna

Mag. Heidi Schrodtr  
Principal



# Our school's strategy aims at educating our students towards:

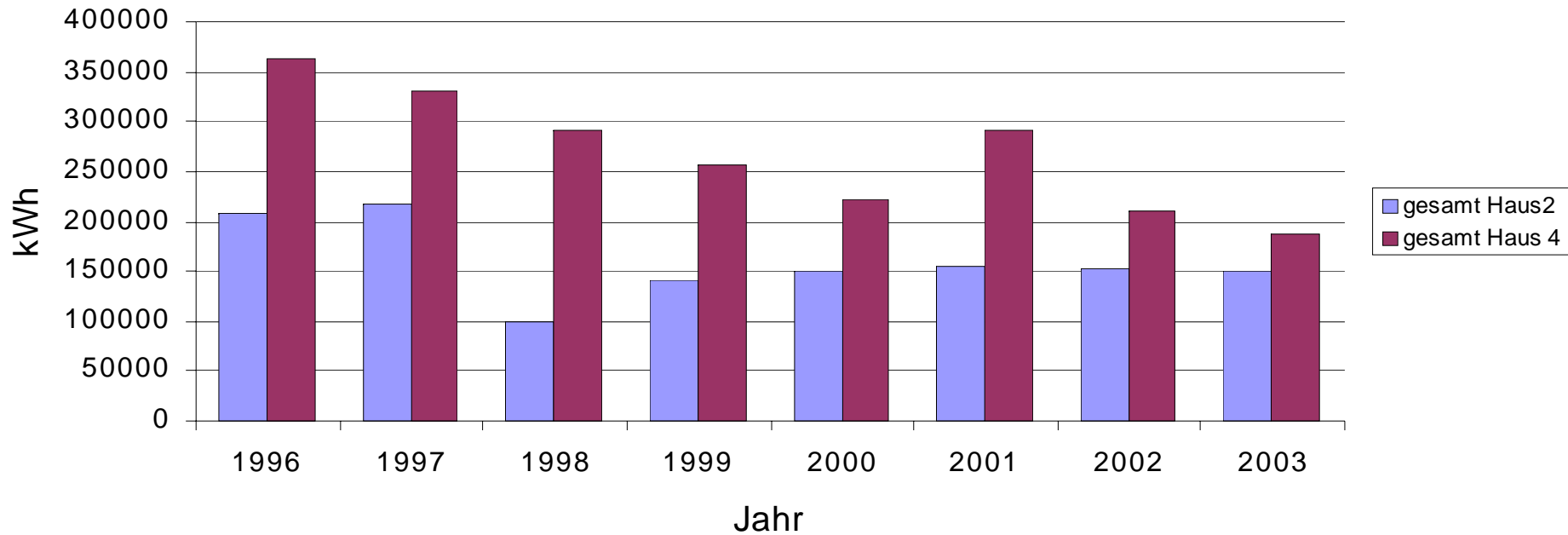
- peace and non-violence
- environmental consciousness and responsibility
- equal rights and diversity
- conscious coeducation
- internationalism and cultural diversity
- social competence

<b>Total CO<sub>2</sub></b>	<b>CO<sub>2</sub> in kg</b>	<b>produced at site(natural gas)</b>	<b>CO<sub>2</sub>/ student</b>
1996	103.438		199
1997	100.045		192
1998	77.561	3.056	149
1999	76.711	3.922	148
2000	72.113	3.558	139
2001	86.281	3.518	166
2002	69.333	3.644	128
2003	63.349	2.640	97

Waste statistics	Volume in l	Mass in kg	Volume in l	Mass in kg	Volume in l	Mass in kg	Volume in l	Mass in kg
not hazardous	2000		2001		2002		2003	
Unseparated waste	180.000	13.500	160.000	12.000	160.000	12.000	160.000	12.000
Paper	40.000	2.800	40.000	2.800	40.000	2.800	40.000	2.800
Metal	14.000	1.820	20.000	2.600	10.000	1.300	2.000	260
Biological waste	4.000	400	4.000	400	4.000	400	2.000	200
Plastic	20.000	400	40.000	800	40.000	800	20.000	400
Coloured glass	0	0	0	0	0	0	0	0
White glass	0	0	0	0	0	0	0	0
<b>Total</b>	<b>258000</b>	<b>18920</b>	<b>264000</b>	<b>18600</b>	<b>254000</b>	<b>17300</b>	<b>224000</b>	<b>15660</b>
Students	520	520	520	520	560	560	640	640
<b>Waste per Student</b>	<b>496,15</b>	<b>36,38</b>	<b>507,69</b>	<b>35,77</b>	<b>470,37</b>	<b>32,04</b>	<b>344,62</b>	<b>24,09</b>
Hazardous	2000		2001		2002		2003	
Chemicals in l	3		1		1		1	
Neon lights per piece	150		150		180		150	

<b>total energy in kWh</b>	<b>Haus 2</b>	<b>Haus 4</b>	<b>total</b>	<b>kWh/ Student</b>
<b>1996</b>	207.175	363.564	570.739	<b>1038</b>
<b>1997</b>	217.739	331.176	548.915	<b>998</b>
<b>1998</b>	99.360	29.1589	390.949	<b>711</b>
<b>1999</b>	141.316	257.484	398.801	<b>725</b>
<b>2000</b>	149.720	221.568	37.1289	<b>675</b>
<b>2001</b>	154.193	291.244	44.5438	<b>810</b>
<b>2002</b>	153.604	209.380	362.984	<b>660</b>
<b>2003</b>	149.351	188.260	337.611	<b>519</b>

# Energiebedarf gesamt



# The Eco-League Game

## The criteria:

### Electricity:

1. Lights are only to be switched on if necessary
2. TV/Videos are switched off, no stand-by modes

### Heating:

3. Windows are closed, rooms are being aired completely at intervals as all windows are opened for the period needed in order to exchange the air.
4. Room temperature is 21° C at maximum (if the radiators are adjustable)

### Waste and cleanliness

5. The separation of waste has been carried out correctly. (The waste bins are emptied periodically)
6. There's no waste on the floor.
7. The desks are covered with packing paper.
8. The shelves are orderly (no waste).

